

TEXAS INTRASTATE FIRE MUTUAL AID SYSTEM (TIFMAS)



Eric Thompson
Fire Chief, Red Oak Fire Rescue
North Branch Coordinator



TIFMAS

- Maintained by Texas A&M Forest Service.
- The program includes grants, training, qualifications and mobilization systems to make ***statewide use of local resources***.



HISTORY

- Established through legislation in 2007
- First deployed 2008
- Operated through the Texas A&M Forest Service
- Funded and approved by the Texas Division of Emergency Management (TDEM)



HISTORY

- Guided by a Stakeholder Group
- Operated by local fire department personnel serving as Branch Resource Coordinators
- Staffed by local firefighters



ALL RISK – ALL HAZARD INTEGRATED STATEWIDE MUTUAL AID RESPONSE



ROLES

- **Local Fire Departments are the Initial and Extended Attack Forces**
- **Texas Forest Service reinforces local fire departments**

ROLES

- TIFMAS provides a “ready reserve” during emergencies
- Federal & State agencies reinforce the Forestry Service

TIFMAS BRANCH RESOURCE COORDINATORS

STATE COORDINATOR
 Chief Keith Kiplinger
 Nacogdoches FD
 kiplingerk@ci.nacogdoches.tx.us
 936-559-2541

PANHANDLE
 Lee Jones
 Lubbock FD
 ljonesl@mail.ci.lubbock.tx.us
 806-549-4936

WEST
 Michael Tully
 Midland FD
 mtullym@midlandtexas.gov
 432-683-7330

Northwest
 Jon Reese
 Wichita Falls FD
 jon.reese@wichitafalls.tx.gov
 940-631-0499

NORTH
 Chief Eric Thompson
 Red Oak FD
 ethompson@redoaktx.org
 469-218-7714

EAST
 Fire Marshal Michael Brown
 Nacogdoches FD
 brownm@ci.nacogdoches.tx.us
 936-554-3908

SOUTH CENTRAL
 Chief Patrick Shipp
 Webster FD
 pshipp@websterfd.com
 281-316-3745

CENTRAL
 Chief JJ Wittig
 Oak Hill FD (TCESD#3)
 jwittig@oakhillfire.org
 512-288-5534 ext. 214
 Cell 512-569-8380

SOUTH
 Chief Kevin Clarkson
 District 7 Fire Rascue
 Firechief@df7a.org
 210-688-0665

TIFMAS
 TEXAS INTERSTATE
 FIRE ACTION AND
 SUPPORT

APPARATUS



Tactical Tender



Type III



Type VI

WILDLAND CACHE

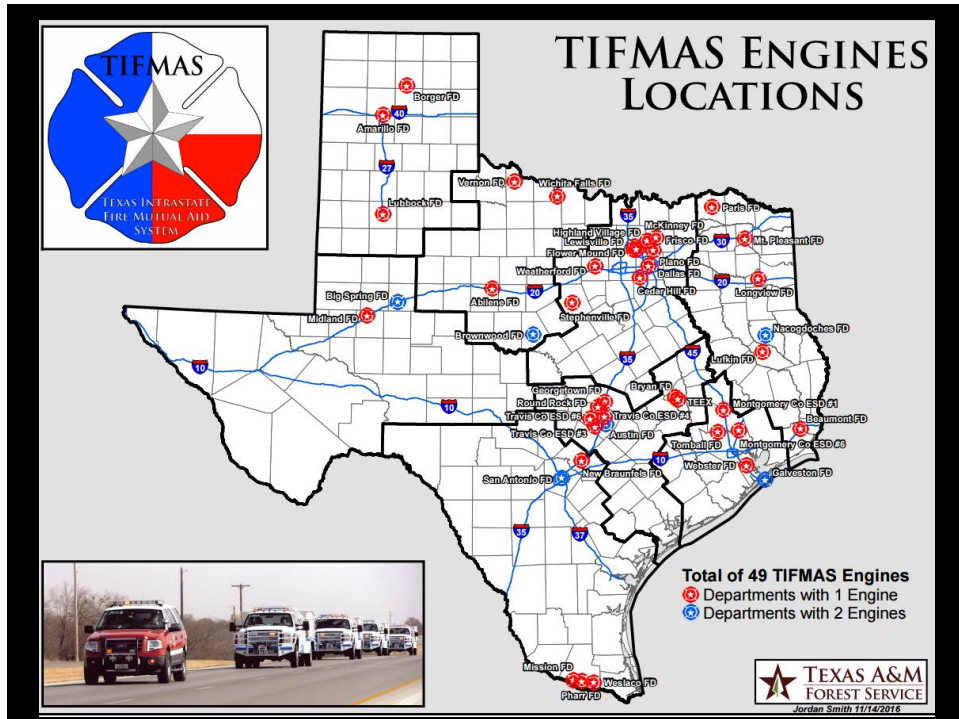
Nacogdoches
100 Person

Austin
100 Person

Midland
25 Person

McKinney
25 Person





PARTICIPANTS (PRE-HARVEY)

DEPARTMENTS

116 Volunteer

119 Combination

109 Career

MEMBERS

5472 All-Hazard

4005 Wildland

1150 Pending

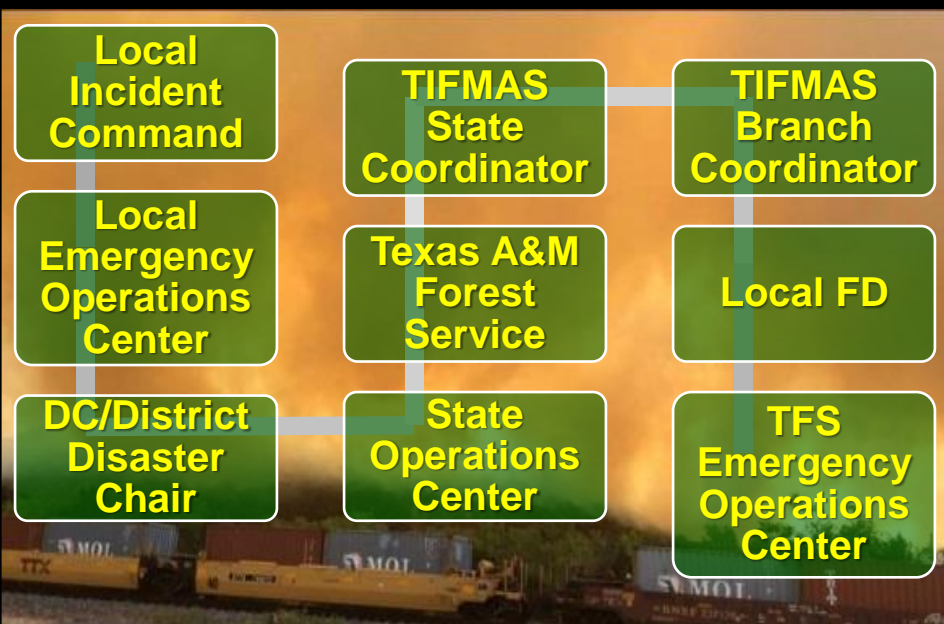
QUALIFICATIONS



- All Hazards/Structural
- Industrial/Specialized
- Wildland



ACTIVATION



Monumental Deployments

- 2008-Hurricane Ike
- 2011- Historic Wildfire Season
- 2013-West Fertilizer Plant Explosion
- 2017- Hurricane Harvey



CAPABILITIES

**On the busiest day in 2011
TIFMAS had 30 Strike Teams
deployed across Texas.**



***Each Strike Team's consist of 5
Engines and Strike Team Leader***

CAPABILITIES - *HARVEY*

TIFMAS deployed 37 Strike Teams which consisted of 985 personnel and 296 pieces of equipment to the Texas Gulf coast.

The Epic Hurricane



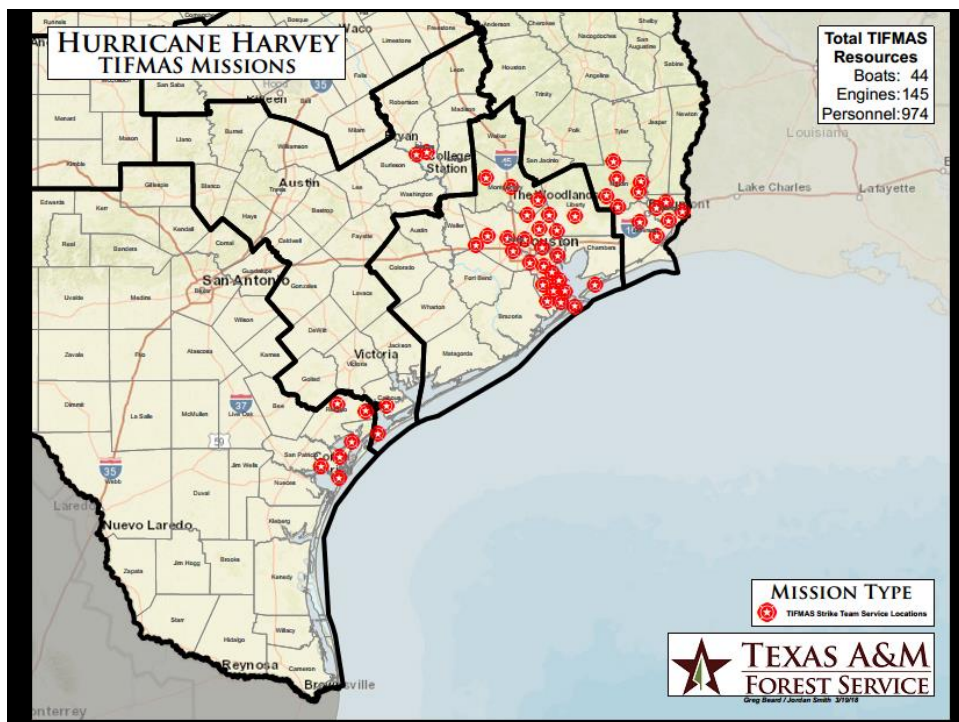
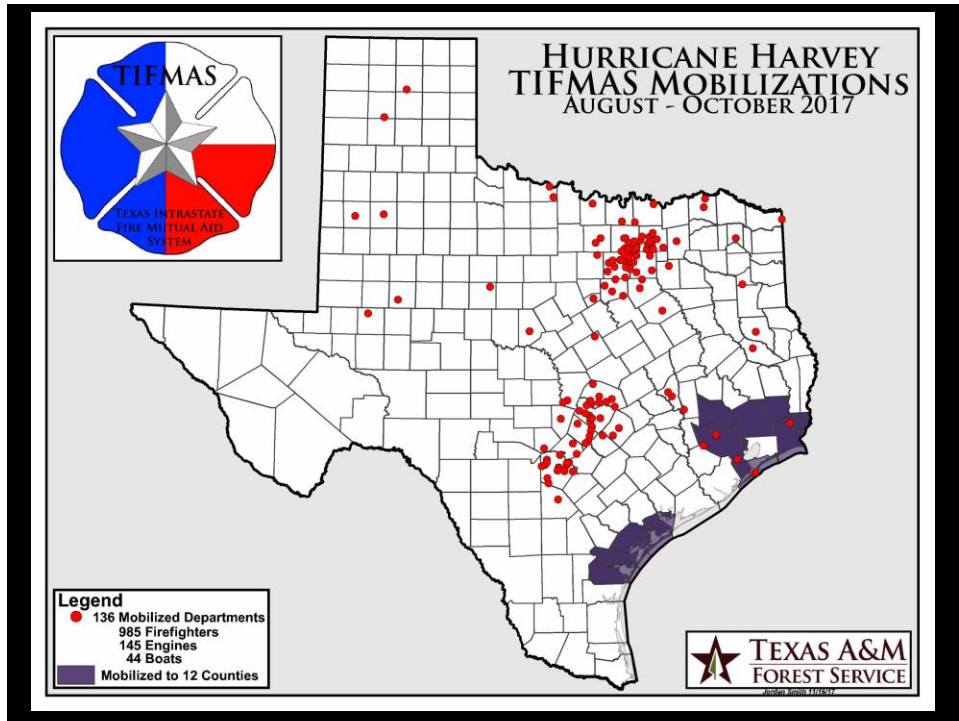
Harvey Timeline

- **August 25, 2017**, Harvey hit Port Aransas and Port O'Connor near Corpus Christi with 130 mph winds. Left 250,000 people without power.
- **August 26**, Harvey moved on to Houston. It remained there for four days. The highways became waterways.
- **August 29**, Harvey made landfall for a third time as it hit the coastal cities of Port Arthur and Beaumont Texas on the border of Louisiana. It dumped 26 inches of rain in 24 hours.
- **August 31**, chemical plant in Crosby, Texas, ignited. The chemicals required refrigeration to stay inert. When the storm disabled the cooling equipment, temperatures rose and the chemicals ignited.
- **September 1**, Harvey dropped 10 inches of rain on Nashville, Tennessee.

TIFMAS Functions During Harvey

- Rescue Operations
- Technical Search Missions
- Fire Suppression
- Supplement water infrastructure for firefighting
- Backfill coverage for fire departments
- Incident Management Teams / POD Support
- Restore & bring stability to local governments





Rescue Operations

- Supported TTF1 & 2 with 44 boat teams
- 841 rescues by air
- 19,050 by ground/water
- 38,000 evacuations
- Access Challenges
- Unclear locations
- Communication gaps
- Animal Rescues
- Civilian Freelance Teams



Photo Credit: Mariet Taylor of CABC News

Technical Search Challenges

- Floodwater
- Structural Damage
- Massive Debris Piles
- EVERYTHING Unstable
- Refuge in upper floors and attic spaces



Access Challenges

- Roads underwater
- Roads washed out
- Debris covering roadways
- Down Utility lines EVERYWHERE
- Boats instead of vehicles
- Loading elderly & children into boats



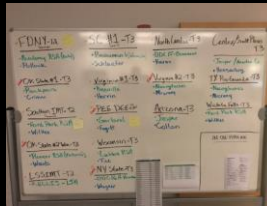
Fire Suppression

- Structure fires
- Boat Fires
- Chemical plants
- Water supply
- Manpower
- Electrical hazards
- Wind driven fires
- Backfill Missions



EOC Operations

- Process STAR Request
- Prioritizing request
- Situational awareness
- Accountability –1000 responders
- Replacement Teams
- Protect the reimbursement process
- Ensure Qualifications of responders
- Communicate with local departments
- Communicate with SOC
- Planning for the days, weeks, months ahead



Community Service

- Tree removal
- Cleared homes of debris
- Cleared roadways
- Welfare of animals
- Manned POD sites
- Support of all kinds
- Tried to restore normal
- Community Assistance

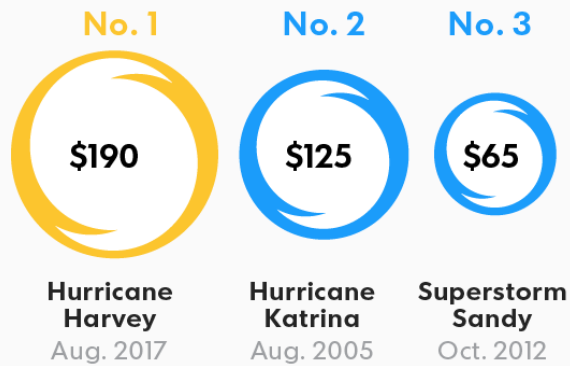
• Community Servants





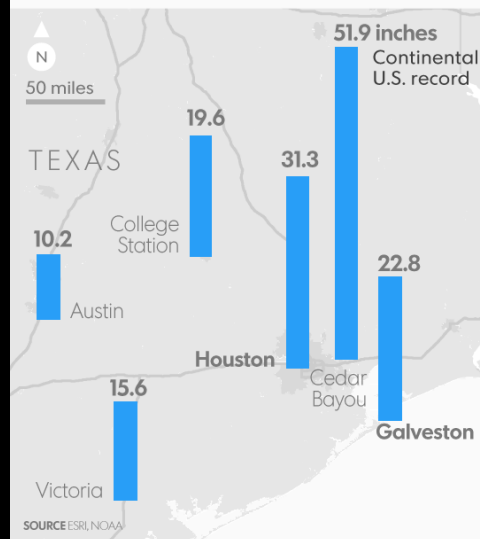
\$190 BILLION

Hurricane Harvey's price tag could dwarf previous natural disasters in the U.S., according to an estimate from weather firm AccuWeather (in billions):



51.9 INCHES OF RAIN

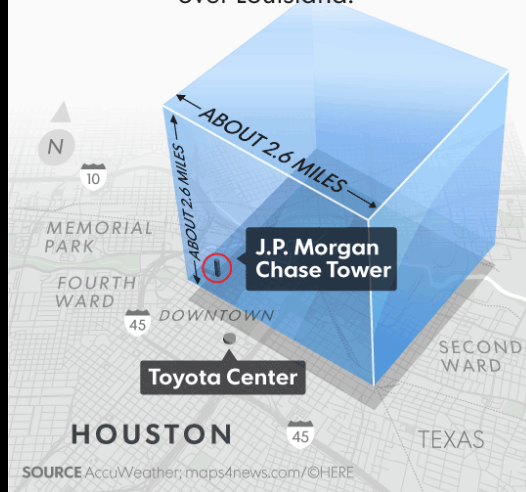
The storm was less than an inch short of breaking the U.S. record for rain dropped by a hurricane or tropical storm, which was set in 1950 in Hawaii. Rain totals through 10 a.m. Wednesday:





19 TRILLION GALLONS

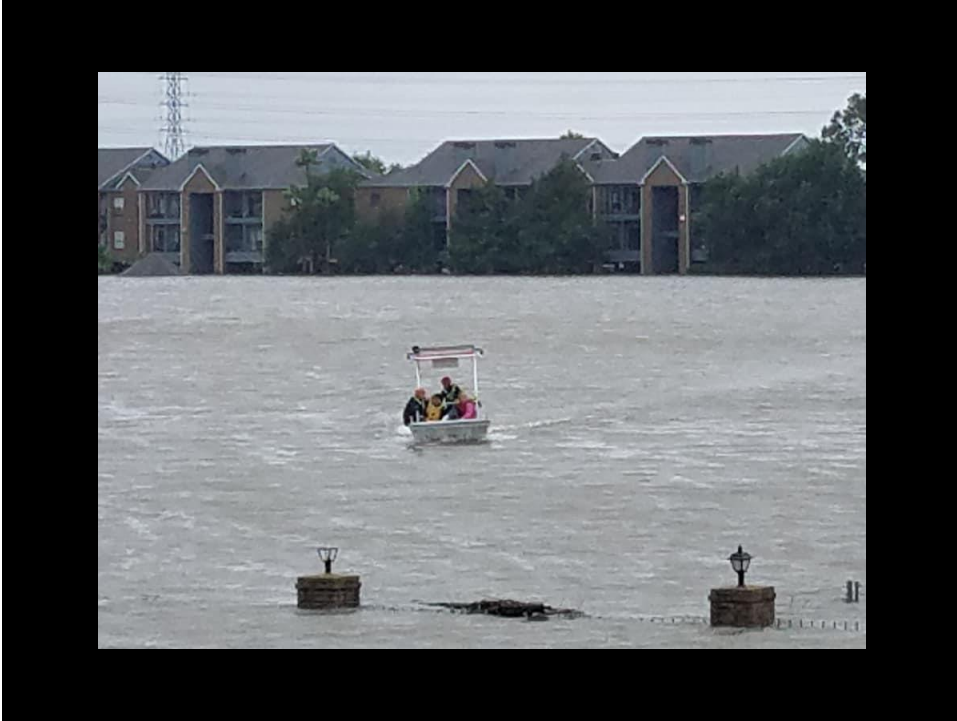
Harvey has dumped about 19 trillion gallons of rain over southeast Texas and another 5.5 trillion gallons over Louisiana.



Texas Economy

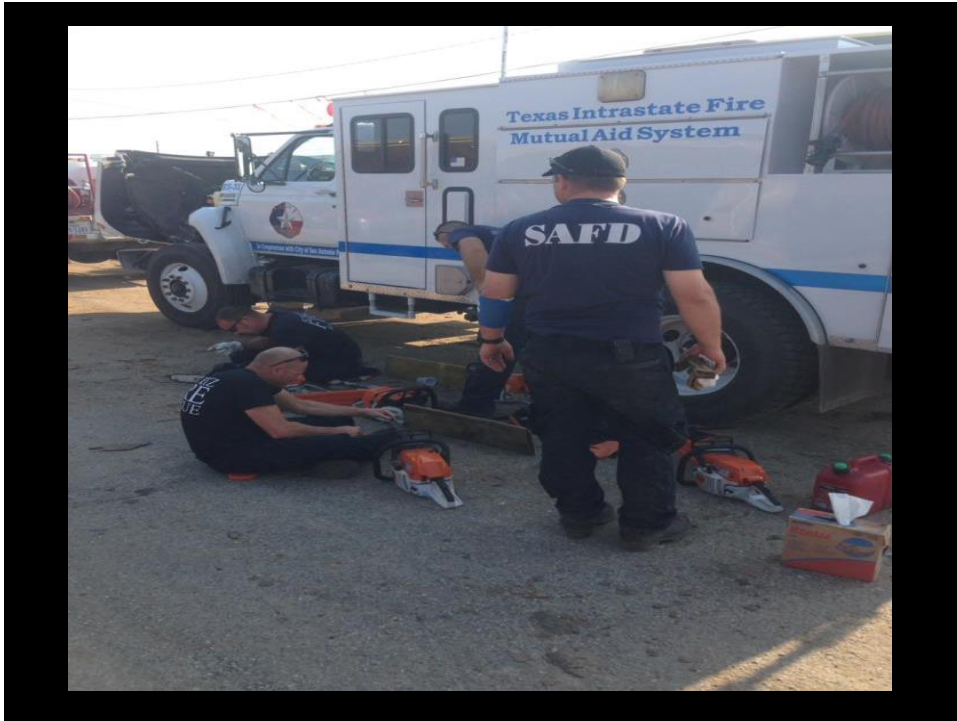
- 41 Counties designated as disaster areas.
- Damaged or destroyed 178,400 homes
- 669 Million in damage to public property
- 1 Million Vehicles
- 200 million in crop & livestock losses.
- 25% of regions Gas / Oil production shut down
- 5% of nations supply
- Estimated Damages 125 Billion.

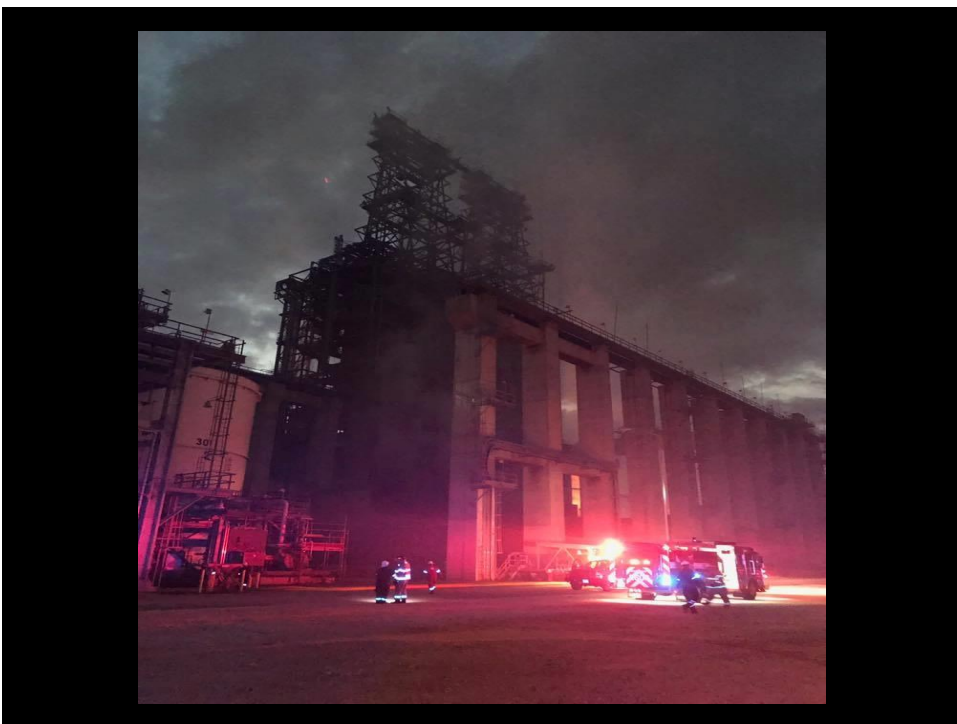










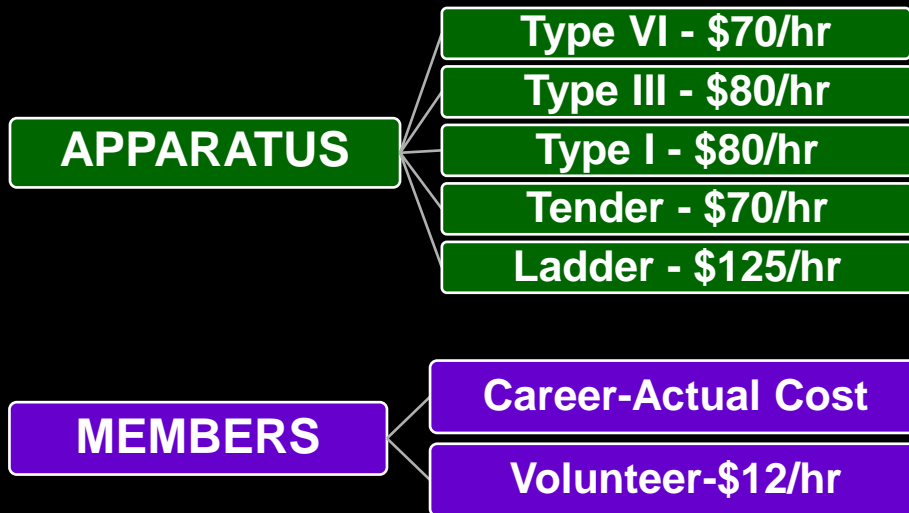








REIMBURSEMENTS



REIMBURSEMENTS

